

For More Information

- by CD Refer to the User manual PDF file included in the Tracker Tool CD
- by internet www.eu3c.com
- by email supports@eu3c.com
- by phone +886-2-2546-7379
- by mail EU3C Company Limited
Unit 7, 8/F., Austin Tower, 22-26 Austin Avenue
Tsim Sha Tsui, Kowloon, Hong Kong



Tracker GT100 Quick Start Guide



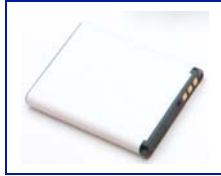
Open box and unpack contents



Tracker GT100



Micro SD memory card
(installed in Tracker)



Lithium ion battery



USB cable



Charger



Tracker Tool CD



Quick Start Guide

Note: SIM card purchased separately. SIM cards can be purchased through GSM mobile network operators such as Orange, Vodafone, T-Mobile, AT&T, etc. SIM cards have various service plans - see operators for details.

Power on and use the Tracker GT100

Press the Power ON/OFF button
Wait approximately one minute
for the Tracker GT100 to boot up
and connect to the GSM phone
service and GPS satellites



LED indicator
will light up



Call the Tracker GT100's SIM
card phone number from a
mobile phone.

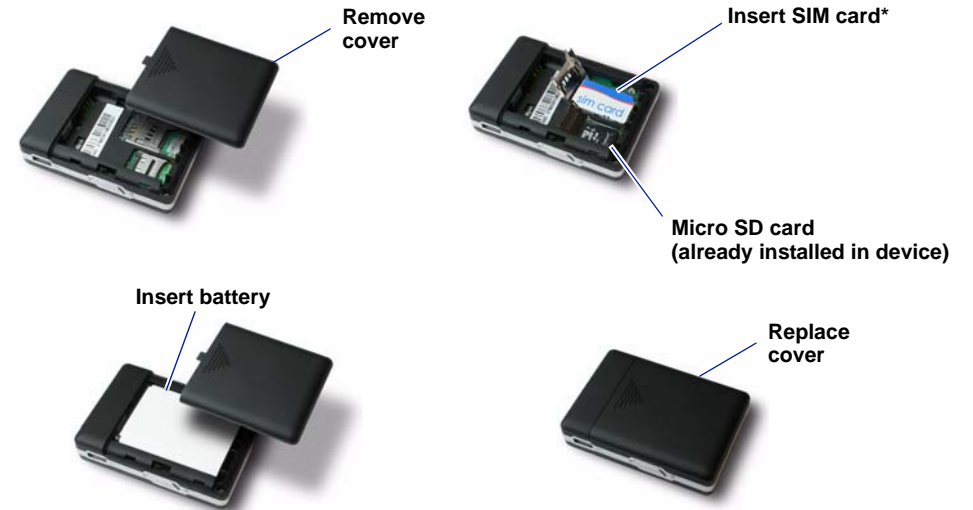
No. 1294 Southgate Ave & Lakeshire
Dr, 244 yds <E> EDISON ELEMENTARY;
South San Francisco, California,
W122.48353, N37.67600

Wait for the ring tone and then
hang up. An SMS message will
soon be sent to the mobile phone
stating the Tracker GT100's
current position

Configure the Tracker GT100



Install SIM card* and battery



*** SIM card purchased separately. SIM cards can be purchased through GSM mobile network operators such as Orange, Vodafone, T-Mobile, AT&T, etc. SIM cards have various service plans - see operators for details.**

Charge the battery



Install the Tracker Tool software

